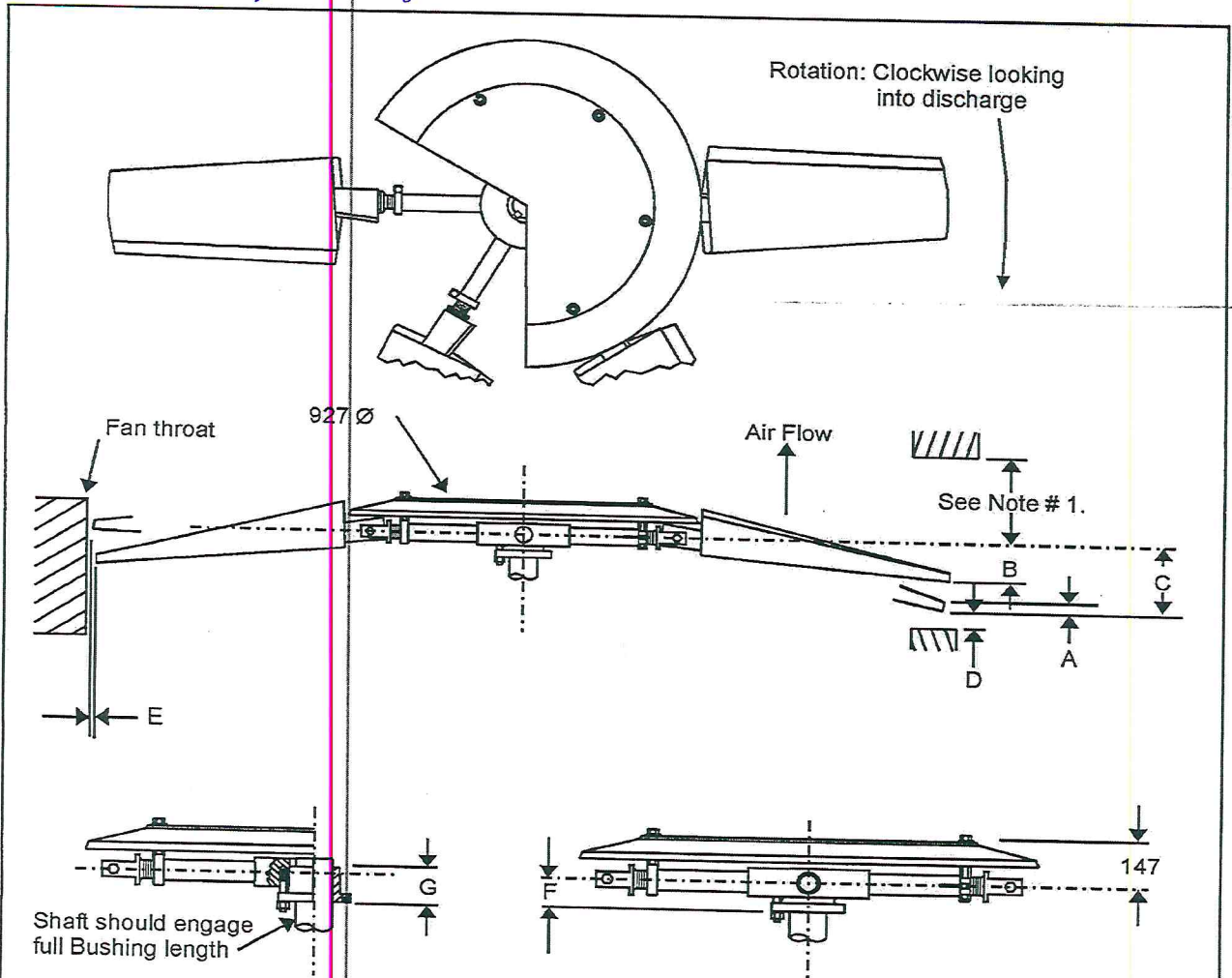


Создано
в соответствии
параметрами

НАЧ. ЧЕРА Н.В.14 № Пенсб В.В.

МОД. ЧЕРА Рот Сторона 93



HUB	MAX BLADES	BUSH TYPE	MAX BORE	DIM 'F'	DIM 'G'
8B	6	QDSF	60	64	53
9B	8	QDSF	60	64	53
9B	8	QDE	75	71	69
8X	6	QDSF	60	135	53
8X	6	QDE	75	140	69
9X	8	QDE	75	140	69

Dim. A = blade thickness at tip at 10° clevis angle.
 Dim. B = running droop of blade.
 Dim. C = stop droop of blade.
 Dim. D = nearest permissible obstruction at blade tip.
 Dim. E = decrease from max. radius of blade (horizontal) to running droop.
 Note # 1.

For obstructions nearer than 305 above blade tube C/L at blade tip. Consult factory.
 Max. fan diameter, blades horizontal (as shipped) equals nominal fan diameter.
 A ± 38 adjustment may be made during installation.

FAN DIA.	DIM. A	With Fan Operating at 61m/s Tip Speed		DIM. C	DIM. D	DIM. E
		BLADE LOAD				
		100%	75%			
1829	76	56	48	112	33	2.5
2134	69	71	58	135	41	3.3
2438	56	84	71	157	48	4.3
2743	43	102	81	180	53	5.1
3048	36	122	97	206	61	6.4
3353	33	142	112	229	69	7.9
3658	30	168	132	254	76	9.7
3962	28	196	152	279	84	11.9
4267	25	226	178	302	91	15.0

CLASS 5000 SERIES 40
Adjustable Pitch Fan Rotor

Letter dimensions may vary with blade angle and loading

MOORE FANS LTD.

PO Box 3245 Eastbourne
 East Sussex BN21 9TG
 Tel: +44(0)1424 845725 mail@moorefans.eu.com

